

RELEASE NOTES LUMINET MONITOR 2.3.2

DOCUMENT INFORMATION

This document lists the new features and bugfixes available in the new release of the Luminet Monitor version 2.3.2.

CONTENTS

FEATURES 2

Lamp library 2

ArtNet4 compliance 2

Lumisplit support 2

LumiNode update 2

LumiCore support 2

Removed ZLib dependency 2

Implement the RDM "Set DMX Fail mode" message 2

Set DMX fail mode from context menu 3

FIXES 3

Fixed translation support 3

RELEASE NOTES LUMINET MONITOR 2.3.2**NEW****FEATURES****■ Lamp library**

Migrated the Lamp Library to the AppData folder to allow easier updates without requiring administrator privileges.

■ ArtNet4 compliance

Luminet Monitor is now compliant with the ArtNet 4 standard.

■ Lumisplit support

Added support for LumiSplit V6.

■ LumiNode update

Allow updating a LumiNode using Luminet Monitor.

■ LumiCore support

Added support for the LumiCore product.

■ Removed ZLib dependency

Removed unused ZLib dependency on MacOS and Linux.

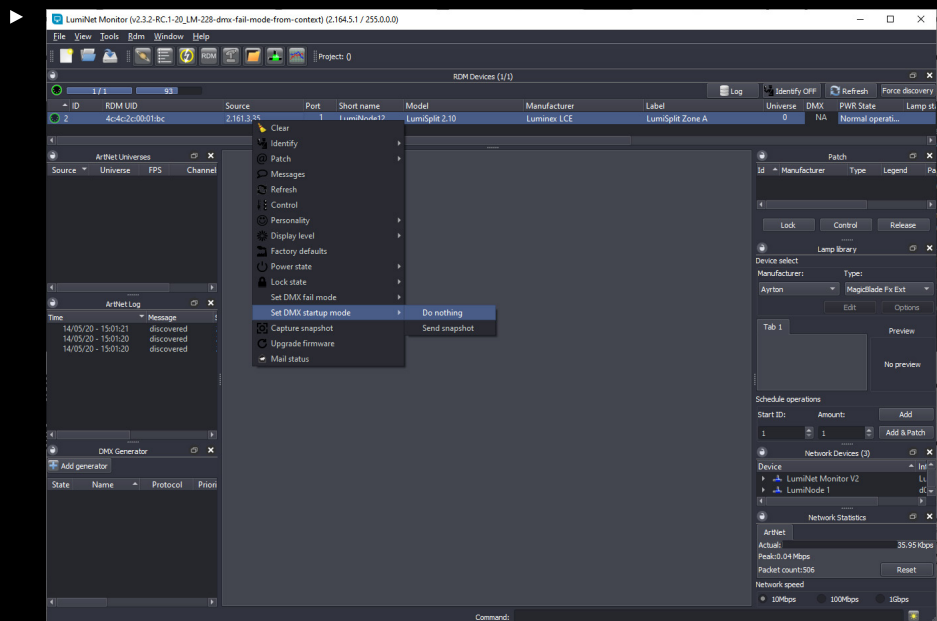
■ Implement the RDM "Set DMX Fail mode" message

Implemented the RDM specification of the "Set DMX Fail mode" message to specify which behaviour should be applied when the DMX input fails.

RELEASE NOTES LUMINET MONITOR 2.3.2

■ Set DMX fail mode from context menu

Allow changing the DMX fail mode and startup mode from the context menu. Additionally, a snapshot can be captured which can subsequently be used for the DMX fail and startup modes.



BUG

FIXES

■ Fixed translation support