

## DOCUMENT INFORMATION

This document lists the new features and bugfixes available in the new ARANEO™ software.

## CONTENTS

<b>FEATURES .....</b>	<b>2</b>
Added visualization for disabled ports .....	2
Improved installer .....	2
Deselect ports when leaving the Group configuration tab .....	2
Allow general group selection in port configuration .....	2
Upgrade sentry.io .....	3
Increase Araneo zoom range.....	3
Optimized text layout.....	3
Invalid settings are not applied .....	3
<b>FIXES .....</b>	<b>4</b>
Fixed zoom-in and -out buttons.....	4
Crash on LACP Rest API call.....	4
Incorrect GigaCore MAC address ranges.....	4
Zoom slider does not work on wheel scroll .....	4
Filter panel draws over the toolbar .....	4
Fixed a bug causing the IGMP protocol text to overlap with the port text.....	4
Incorrect fan speeds and temperatures.....	5
GigaCore lock bug .....	5
IGMP entries.....	5
Firmware update.....	5
Fix "Reset" and "Reboot" dialog window layouts.....	5
Ignore MSVC runtime installed error.....	5
Crash on clearing network .....	5
<b>LIMITATIONS, KNOWN ISSUES, AND RESTRICTIONS .....</b>	<b>6</b>

**NEW** FEATURES

■ **Added visualization for disabled ports**

Disabled ports are now shown with a black background and crossed out.

■ **Improved installer**

Installer modified to improve user experience.

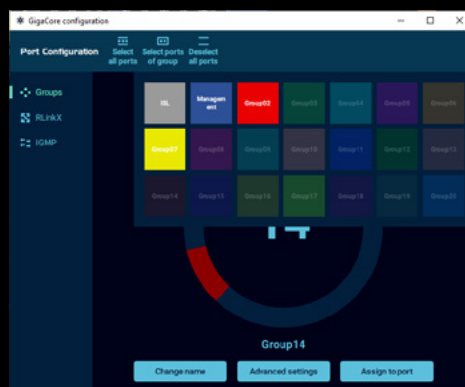
■ **Deselect ports when leaving the Group configuration tab**

In the port configuration dialog window, all the ports will become deselected when the user leaves the group configuration tab. This change is motivated by many users accidentally creating a broadcast storm, since they enter the RLinkX tab, unaware that the ISL ports were selected in the group configuration tab.

■ **Allow general group selection in port configuration**

In the port configuration dialog, clicking on "Select ports of group" will open a popup showing all the "active groups" on the network and allow a user to select those ports.

Previously, this button only worked in the "Groups" tab and only allowed to select the group indicated with the dial. Thanks to the more general implementation, this button can also be used in the RLinkX tab.



## RELEASE NOTES ARANEO 1.2.1



### ■ Upgrade sentry.io

Upgrade the sentry.io to the latest version.

### ■ Increase Araneo zoom range

The zoom range is increased from 10% — 300% to 1% — 10000%. Additionally, the zoom grid now scales dynamically with the zoom level and the zoom speed has been changed to allow a constant zoom-in and-out speed.

### ■ Optimized text layout

Applied some optimizations to spend less time formatting text.

### ■ Invalid settings are not applied

In the group configuration windows, the apply button is no longer greyed out when there are invalid settings. Settings which are invalid or in tri-state are now just no longer applied/changed.

## BUG

## FIXES

### ■ Fixed zoom-in and -out buttons

Fixed the zoom-in and -out buttons, which did not work due to a variable rename.

### ■ Crash on LACP Rest API call

Resolved a crash in the Rest API call for the LACP Rest API call where Araneo crashes when a port is added or removed from a LACP group due to an invalid iterator.

### ■ Incorrect GigaCore MAC address ranges

Solved a crash when GigaCore's on the network have neighbouring MAC address ranges.

### ■ Zoom slider does not work on wheel scroll

Fixed a bug in the Zoom dialog where using the scroll wheel on the slider did not work.

### ■ Filter panel draws over the toolbar

Reordered the UI elements to prevent the filter panel from drawing over the toolbar

### ■ Fixed a bug causing the IGMP protocol text to overlap with the port text

Enabled text wrapping to prevent the protocol description in the IGMP tab to overlap with the port number.



## RELEASE NOTES ARANEO 1.2.1



### ■ Incorrect fan speeds and temperatures

Araneo reported too many temperature and fan speed sensors for GigaCore 10, GigaCore 12, GigaCore 14R, GigaCore 16Xt and GigaCore 16RFO.

### ■ GigaCore lock bug

Solved a bug preventing Araneo to lock/unlock GigaCores.

### ■ IGMP entries

Fixed a bug causing the IGMP tab to miss entries and show erroneous ports next to an IGMP entry.

### ■ Firmware update

Fixed a bug causing Araneo to send an overload of firmware update requests in larger networks.

### ■ Fix "Reset" and "Reboot" dialog window layouts

Fixed the layout of the text in the "Reboot" dialog to wrap, and added a missing import in the "Reset" dialog.

### ■ Ignore MSVC runtime installed error

Changed the parameters for the MSVC runtime installation to ignore an error thrown when the MSVC runtime or a newer version is already installed. MSVC runtime installation is now also executed with administrative privileges.

### ■ Crash on clearing network

Due to a signal-slot loop, Araneo crashed when the network was cleared by deselecting and unbinding all the interfaces.

### ISSUES

- In some situations, it is possible that Araneo will detect a large number of erroneous connections to edge devices. This will only happen on an ISL port, when the MAC table contains a lot of entries and no RLinkX or LLDP neighbour is detected. The current workaround when this happens is to use the "Clear Down Connections" button.
- Currently, when Araneo monitors more than one network (on separate interfaces), the log dialog will fill with incorrect messages that the "Root Bridge" has changed.