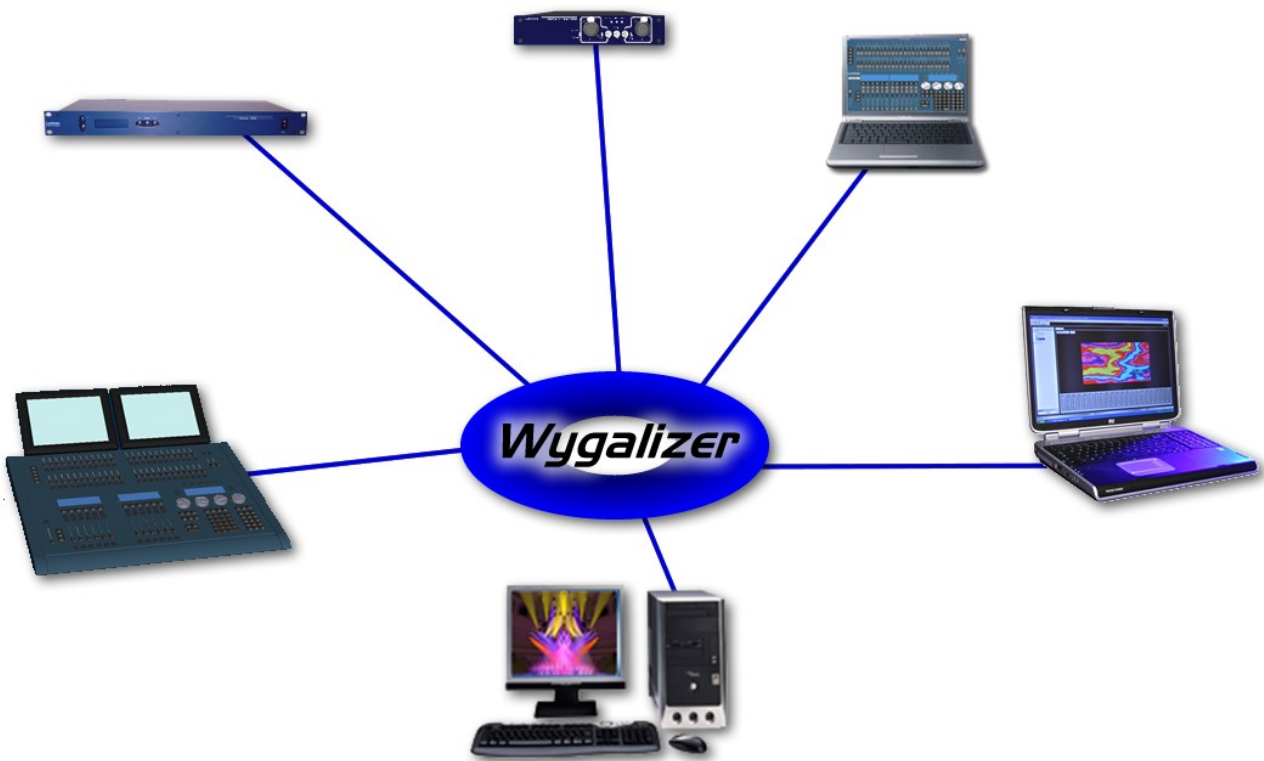


Wygalizer Quick Start

Quick start guide



Visualize your lighting data on Wysiwyg from any ArtNet sources

LUMINEX Lighting Control Equipment
Wygalyzer Quick Start Quick start guide
Document Quick_start

Copyright © 2003-2006 LUMINEX Lighting Control Equipment.
All rights reserved.

No part of this documentation may be reproduced or transmitted in any form or by any means, electronic or mechanical, including photocopying and recording, without the prior written permission of Luminex.

The information in this documentation is supplied without warranty of any kind, either directly or indirectly, and is subject to change without prior written notice. Luminex, its employees or appointed representatives will not be held responsible for any damages to software, hardware, or data, howsoever arising as a direct or indirect result of the product(s) mentioned herein.

Issued by:

Publications Department,
Luminex LCE,
Berkenlaan 8a,
Hechtel - Eksel,
B-3940,
Belgium.
Documentation reviewed by Bart Swinnen.
Printed in the EU.

Table of Contents

Updating Wysiwyg.....	4
Installation.....	4
Start.....	5
Wysiwyg connection.....	6
Device properties.....	7
Port Binding.....	8

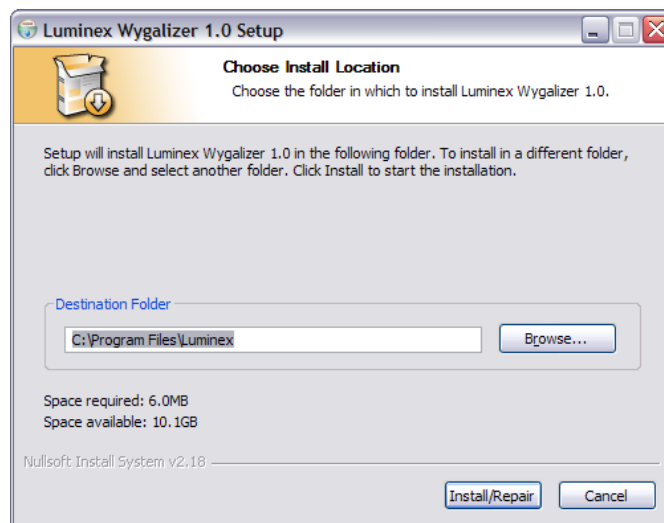
Updating Wysiyg

In order to visualize your ArtNet datas in Wysiyg, you must first update your library definition by downloading the Eth-256DMX.CFB from Castlighting Web Site at www.cast-soft.com. The file will be automatically included from version 18.

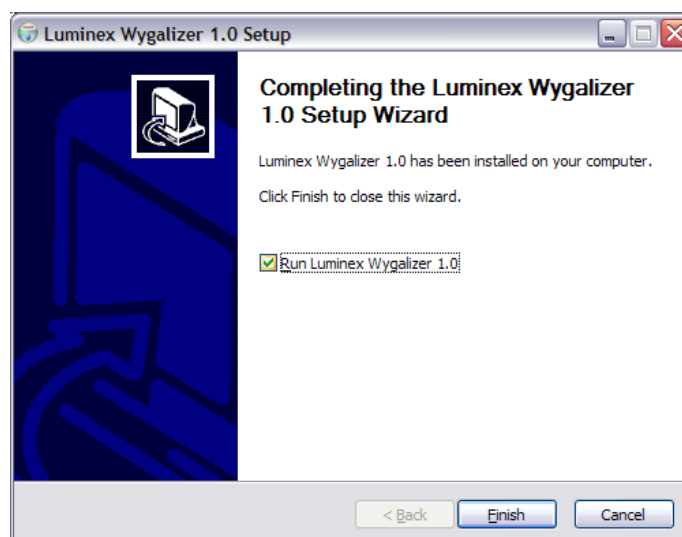
Once done, copy this file into Wysiyg library folder (usually C:\Program Files\WYSIWYG\Library)

Installation

- Download the file at <http://www.luminex.be> in Support>Wygizer
- Unzip the downloaded file and run the setup.exe



Once installation is finished, the software will launch automatically. You can launch it also by clicking on the icon created on your desktop or from your program tree.



When the install complains about missing shared libraries, you need to download vcredist_x86.exe from the Microsoft download center.

<http://www.microsoft.com/downloads/>

search for "vcredist_x86.exe"

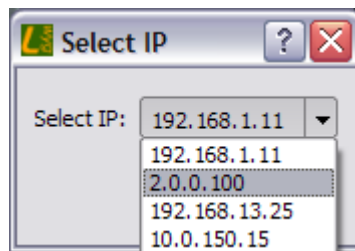
--> Visual C++ 2005 Redistributable Package (x86)

Start

While launching the application, a small window appears to select the IP address configured on the computer you wish to use to visualize your ArtNet data.

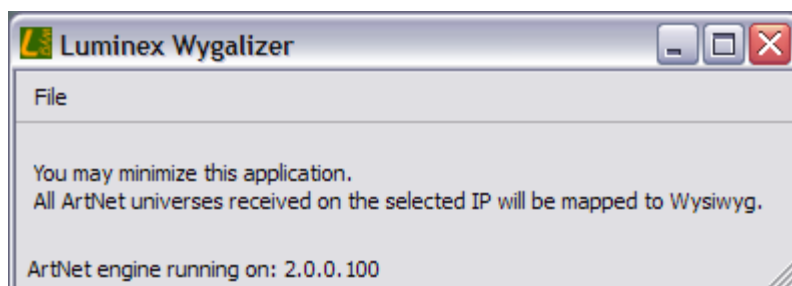
The selected IP address must be included in the same network as the one used by the ArtNet source(s) you want to visualize.

(ex: 2.0.0.100 could be used with 2.0.10.45)



Select the correct IP address and click OK.

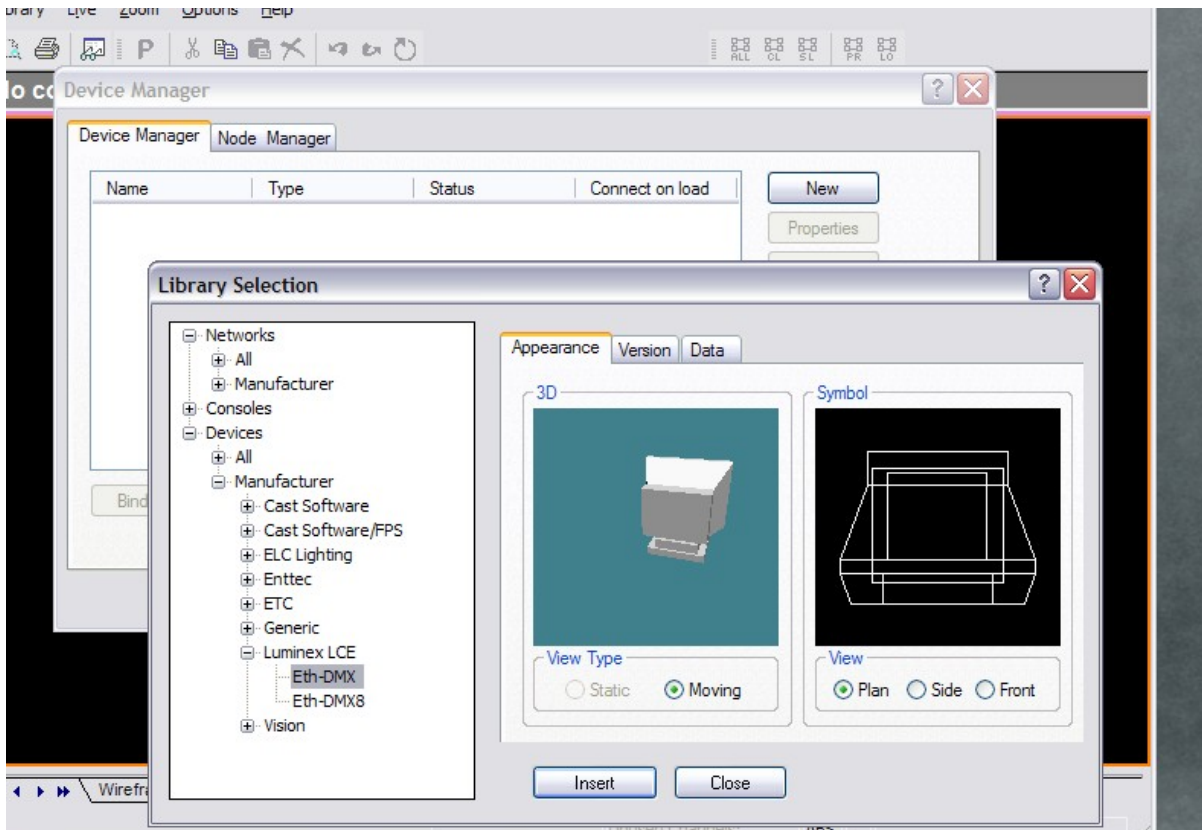
A small window appears, Luminex Wygalizer is now running on your computer.



Wysiwyg connection

Start the device manager in Wysiwyg to connect to the Eth-DMX driver.

Note: one Eth-DMX run all 256 universes available on ArtNet.

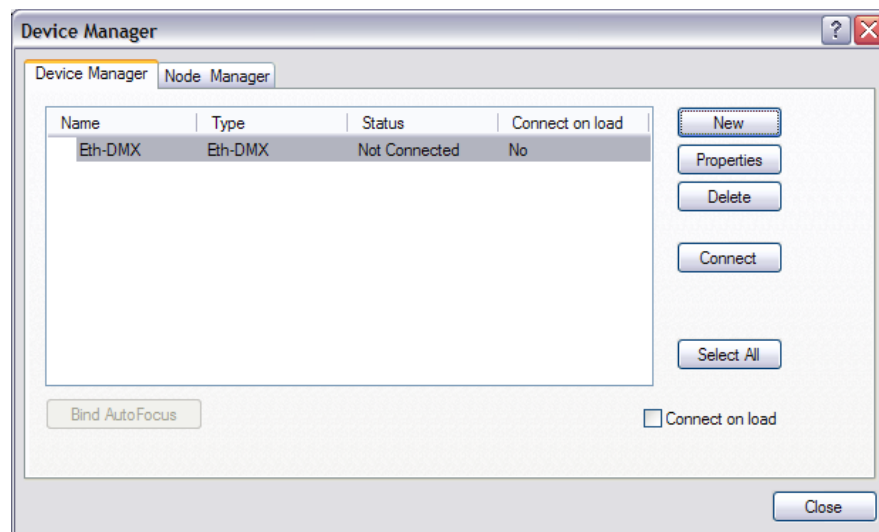


Click "new" in the device manager to add a device.

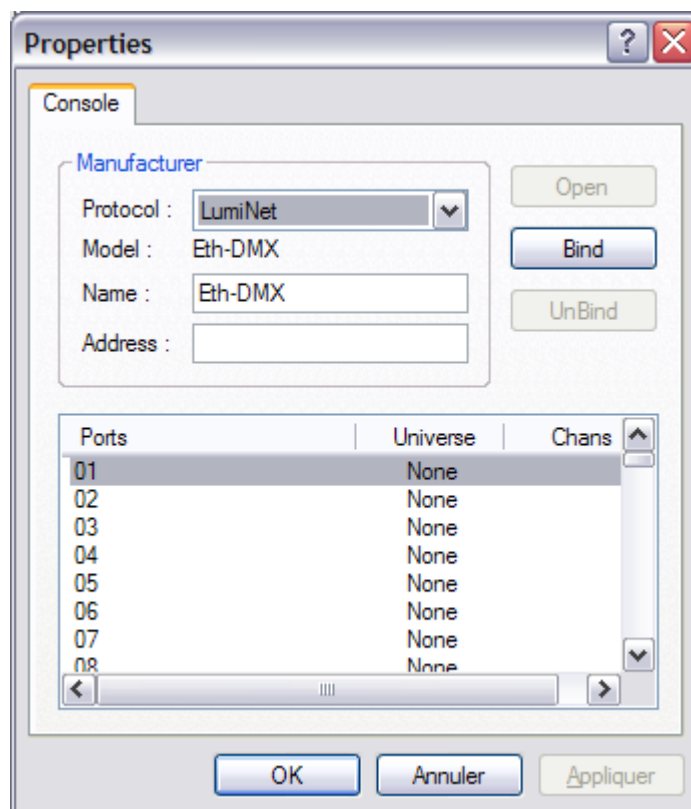
Select the Luminex LCE -> Eth-DMX from the device list and click insert.

Note: the Eth-DMX driver has not to be confused with the Eth-DMX8 driver which is used to bind only 4 universes on a Luminex Ethernet-DMX8 node.

Device properties



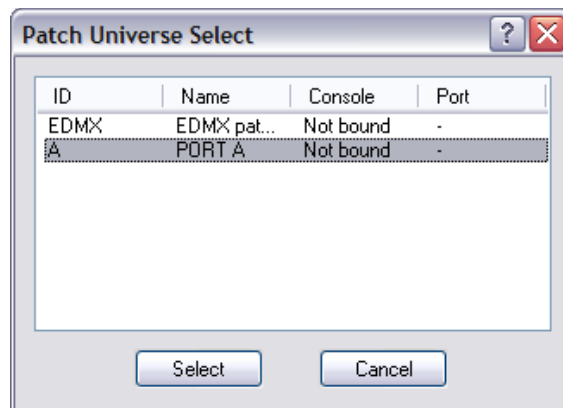
Select the inserted device and click "properties" (or double click the device).



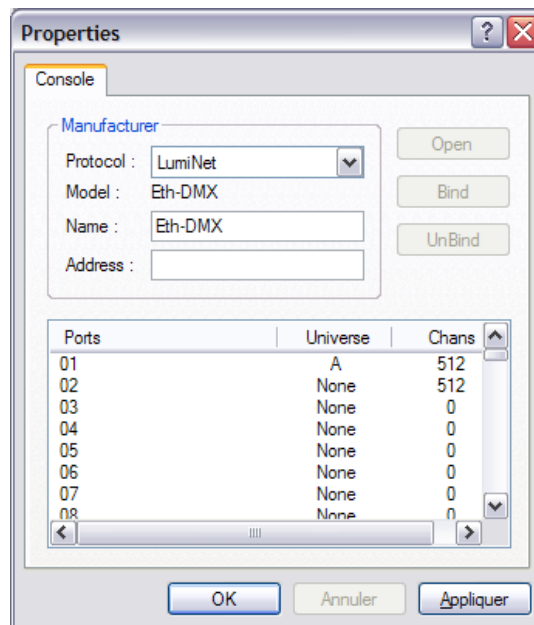
The ports column represents the 256 universes available on ArtNet, the universe column correspond to the Wysiwg universes, and the Chans column show you the number of DXM channels streamed from this ArtNet universe.

Port Binding

Double click on the ArtNet universe you want to bind



a small window let you choose the Wysiyg universe to bind. When selected, click on the select button.



Now you can see that ArtNet universe (port) 1 is binded with Wysiyg universe A. We can also notice that ArtNet universe 2 is actually streaming 512 channels on the network.

Luminex highly recommend to disconnect the Eth-DMX driver in the device manager window when adding/removing universe(s).

NOTE: ALWAYS REMEMBER THAT LUMINEX UNIVERSE NUMBERING START FROM 1 TO 256 (example: Luminex Univers 1 = ArtNet 00).